



Changing Families in a Changing World

Uncertainties in Employment Careers and the Postponement of Parenthood in Hungary

Ivett Szalma – Hungarian Academy of Sciences
Corvinus University of Budapest

Edinburgh, 16 June 2010



Outline of the presentation

- Research questions
- Theoretical background
- Hypotheses
- Data and measures
- Results of the empirical research
- Summary
- Further Plans



Research questions

- How the labour market situation influence the decisions about the childbearing between men and women?
- Does the subjective employment status (worrying about economic situation or job security) influence the transition to parenthood?
- How does the educational level influence the decision about the childbearing between men and women?
- Does income have an adverse effect on childbearing by men and women?

Theoretical background I.

- New Home Economic theory which states that the female education, income and employment increase the opportunity cost of childbearing and result in lower fertility rate (Becker 1981).
- SDT has highlighted the role of values and ideas for explaining fertility and family dynamics: the fall in propensity to have children are due to that the self-fulfillments became more and more important. (Van de Kaa 1987).
- The two above mentioned approaches have something in common: both rely on the idea that female emancipation and employment are harmful for fertility (Kreyenfeld 2009).
- However according to a series of recent empirical studies the negative relationship between female participation and fertility no longer holds. It was supported by a meta-analysis of studies researching the association between fertility and women's employment across the member states of the European Union. (Matysiak and Vignoli 2008)



Spillover hypothesis



Theoretical background II.

- The role of structural factors in Hungary
 - Expansion of the education system (Frey 2001)
 - The work-life careers became less stable and more heterogeneous as far as working conditions and job securities.
- Partnership formation in Hungary (Bukodi 2002)
 - The number of marriages drops and marriages shift to older ages.
 - The cohabitation is widespread (especially among young people when their labour market positions are unsteady).
- Fertility trends in Hungary (Spéder 2002)
 - TFR sank below 1,3 (the lowest low fertility).
 - The change in fertility pattern manifested itself first among generations born at the end of 1960s.
- Hungarian situation
 - Raising children is one of the most important poverty risk in Hungary.
 - Pursuing success in the employment career requires time and energy and may conflict with the norm of „responsible parenthood” especially because the Hungarian men are not involved in housework and women have double burn (Takács 2008)



Hypotheses

- The main hypothesis: having an insecure job decreases the chance to having children. (Spillover hypothesis)
- Those who worries about their economic situation or their job security are less likely to become parents or have other children.
- We suppose that the high income has negative effect on the decision of childbearing among women because it increases the opportunity cost. Among men the high income promotes the decision of childbearing.
- We think the marriage increase the odds of first child among both men and women.



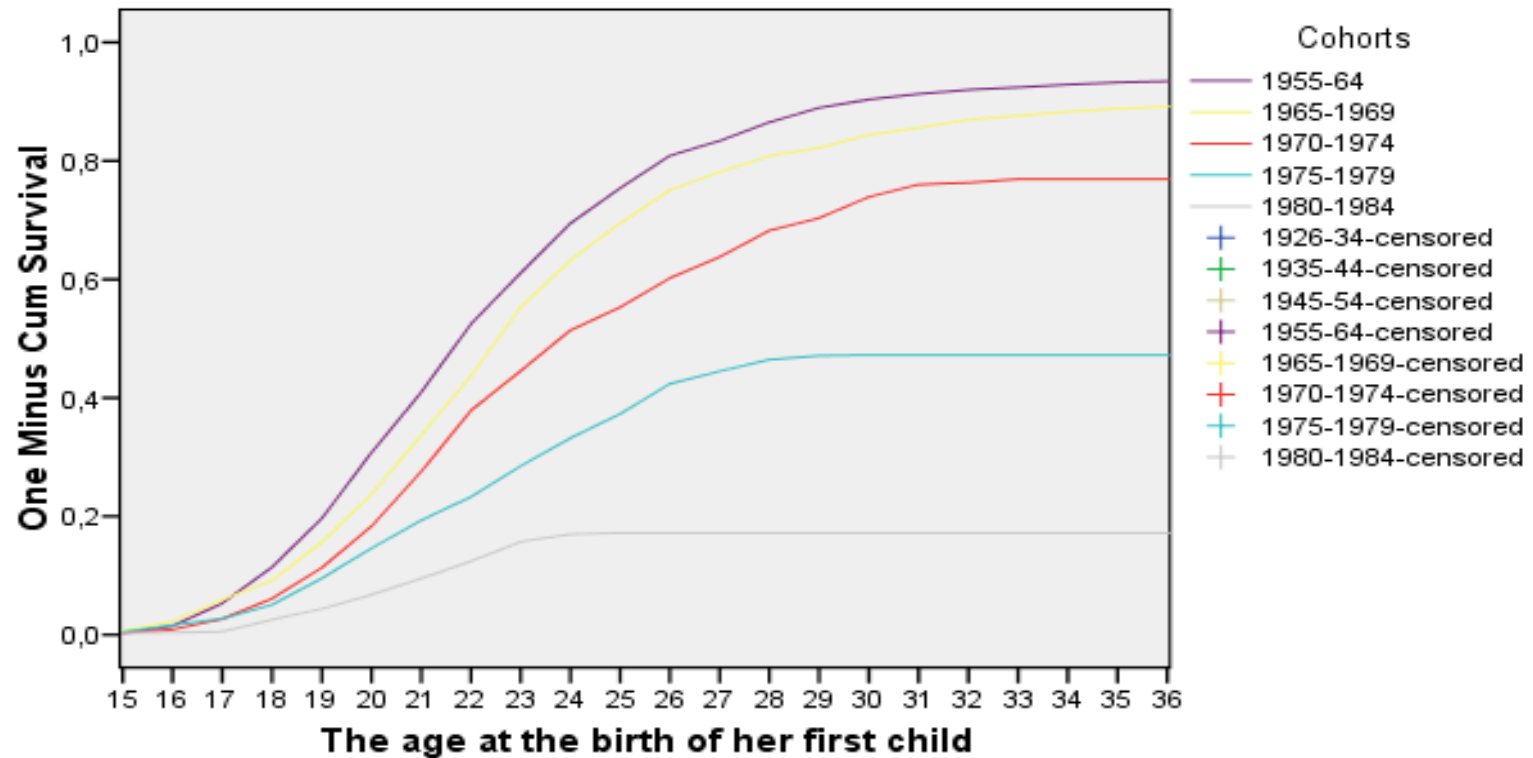
Data and measures

- Our data come from the large scale panel survey Gender and Generation (GGS) conducted by the Demographic Research Institute of HCSO. Data of the first and second were collected in 2001 and 2005 respectively.
- We proceed with presenting the results of a discrete-time event history analysis.
 - Observations: the characteristic of individuals in a given time point.
 - Statistical method: logistic regression.
 - The analyses were carried out on women born between 1956 and 1983, and on men born between 1951-1983.
- The dependent variable indicates the event of assumed conception (date of birth minus nine months), not the birth of the child.
- The independent variables are: employment status, subjective employment status, highest level of education, relative income, cohabitation, age.

Average age of mothers at childbirth— Kaplan-Meyer analysis

One Minus Survival Functions

Female





Average age of fathers at childbirth— Kaplan-Meyer analysis

The results of the empirical research I.

Logistic regression estimates of the event history model of childbearing. **Women**

	Only first child	Second and third children
Employed in full time with permanent contract	+	n.s.
insecure employment	n.s.	n.s.
unemployed, inactive, or dependent	Ref. category	Ref. category
on maternity leave	-----	+
entrepreneur	n.s.	n.s.
Completed Primary Education or less	n.s.	+
Completed Vocational School	+	n.s.
Completed Secondary General School	Ref. category	Ref. category
Completed College or University	n.s.	n.s.
Income	n.s.	n.s.

The results of the empirical research II.

Logistic regression estimates of the event history model of childbearing. **Men**

	Only first child	Second and third children
employed in full time with permanent contract	+	n.s.
insecure employment	+	n.s.
unemployed, inactive, or dependent	Ref. category	Ref. category
on maternity leave	-----	n.s.
entrepreneur	+	n.s.
Completed Primary Education or less	n.s.	+
Completed Vocational School	n.s.	n.s.
Completed Secondary General School	Ref. category	Ref. category
Completed College or University	n.s.	+
Income	n.s.	n.s.

The results of the empirical research III.

Logistic regression estimates of the event history model of childbearing. **Women**

	Only first child	Second and third children
1956-1965	Ref. category	Ref. category
1966 - 1975	+	+
1976 - 1983	+	n.s.
lives without partner	-	-
lives with partner (time-varying)	Ref. category	Ref. category
lives with husband (time-varying)	+	n.s.
Not worried about their economic situation	Ref. category	Ref. category
Somewhat worried	n.s.	n.s.
Worried	n.s.	n.s.
Not worried about their job security	Ref. category	Ref. category
Somewhat worried	n.s.	n.s.
Worried	n.s.	n.s.

The results of the empirical research IV.

Logistic regression estimates of the event history model of childbearing. **Men**

	Only first child	Second and third children
1951-1965	Ref. category	Ref. category
1966 - 1975	+	+
1976 - 1983	+	+
lives without partner	-	-
lives with partner (time-varying)	Ref. category	Ref category
lives with husband (time-varying)	+	+
Not worried about their economic situation	Ref. category	Ref. category
Somewhat worried	n.s.	n.s.
Worried	n.s.	n.s.
Not worried about their job security	Ref. category	Ref. category
Somewhat worried	n.s.	n.s.
Worried	n.s.	n.s.

Some Interaction Effects

Results from interaction models, Logistic regression estimates of the event history model of childbearing

	Only first child Coef.	Second and third children
Insecure employment*women	n.s.	+
Unemployed, inactive or dependent*women	n.s.	+
Maternity leave*women	-----	n.s.
Enterpreneur*women	-	n.s.
Completed Vocational School*women	n.s.	n.s.
Completed Secondary General School*women	n.s.	n.s.
Completed College or University*women	-	n.s.
Income*women	n.s.	-
Maternity leave*Completed College or University (only women!)	-----	+



Main Findings

- We found that the first childbearing was influenced by the labour market status for women – employment in full time with permanent contracts has a definite positive effect on transition to motherhood.
- Women already on maternity leave are more likely to have a second or third child than women who are unemployed, inactive or dependent.
- The subjective economic uncertainties does not have significant effect.
- The employment status has even stronger effect on men than women: in all position men have higher probability to have a child/children than their counterparts who are in inactive status.
- Our findings also demonstrate that living with a husband/wife promotes the births of first, second and also third children for men, but for women the marriage has positive effect only on the first child and the all birth, and we could not find any effect on second or third children.



Summary

- The fertility pattern has undergone substantial changes during the past two decades. The number of childbirths is becoming fewer and fewer.
- We can prove our spillover hypotheses. Both women and men try to secure their employment position before having children.
- Time squeeze or „work accelerated childbearing” can be observed among highly educated women.
- The low educated women are the most likely to have second and third children, which supports the alternative carrier hypothesis. Among the men those who completed college or university are the most likely to have second or third children.
- Our findings also demonstrate that living in a marriage promotes the births of first, among men and women, but we cannot find evidence for the positive effect of marriage on the second and third children among women.



Further Plans

- To create a more sophisticated model
 - More emphasis on the interaction effect, especially in case of the subjective uncertainties variables and educational level.
 - More detailed cohort analysis
 - Pay attention to the duration time in the model



Thank you for your attention!

Questions and comments are mostly welcome