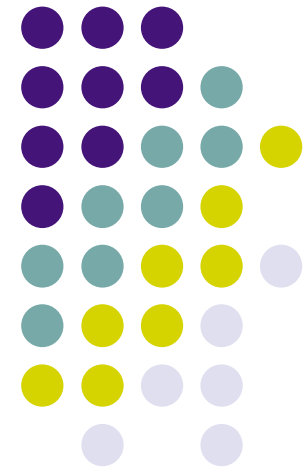


# Union formation & Union dissolution

---

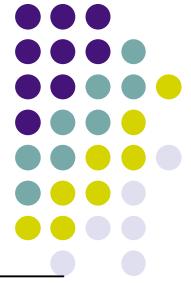
Ghanaian migrants in the Netherlands  
& the U.K.



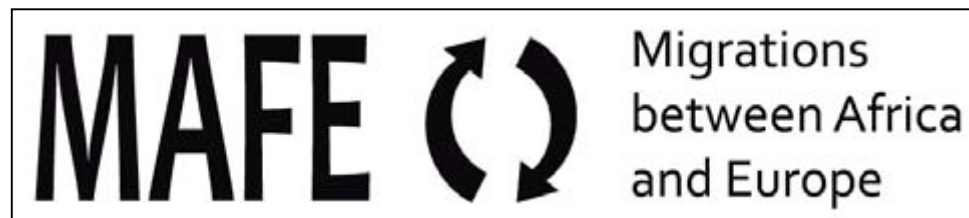
By: Kim Caarls, PhD Candidate, Maastricht University, June 2010

# PhD project

---



## Transnational Families: Migration Strategies and Socio-demographic changes



Supervisors: Valentina Mazzucato & Djamila Schans

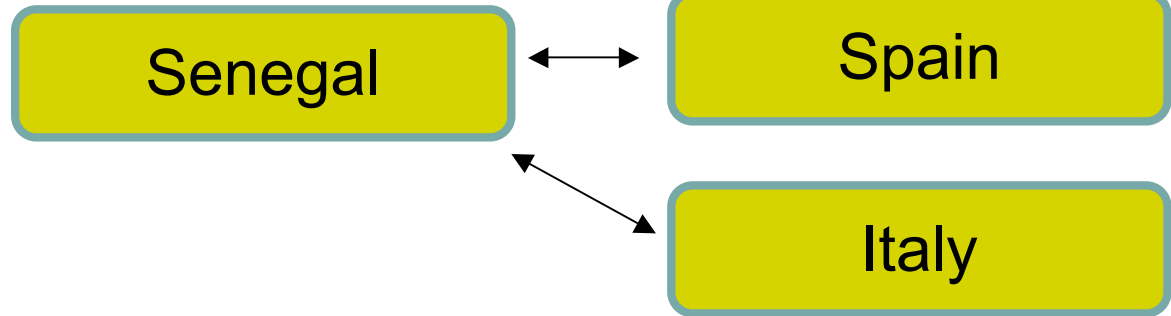
# MAfE

---

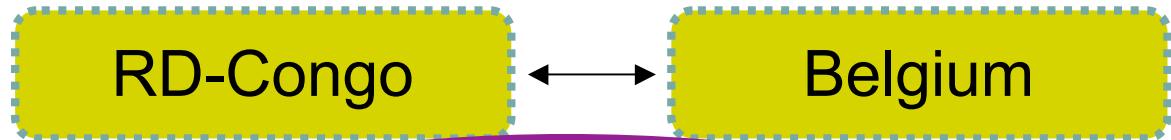


- Migrations *between* Africa and Europe
- Three migration flows
  - ‘new African diasporas’

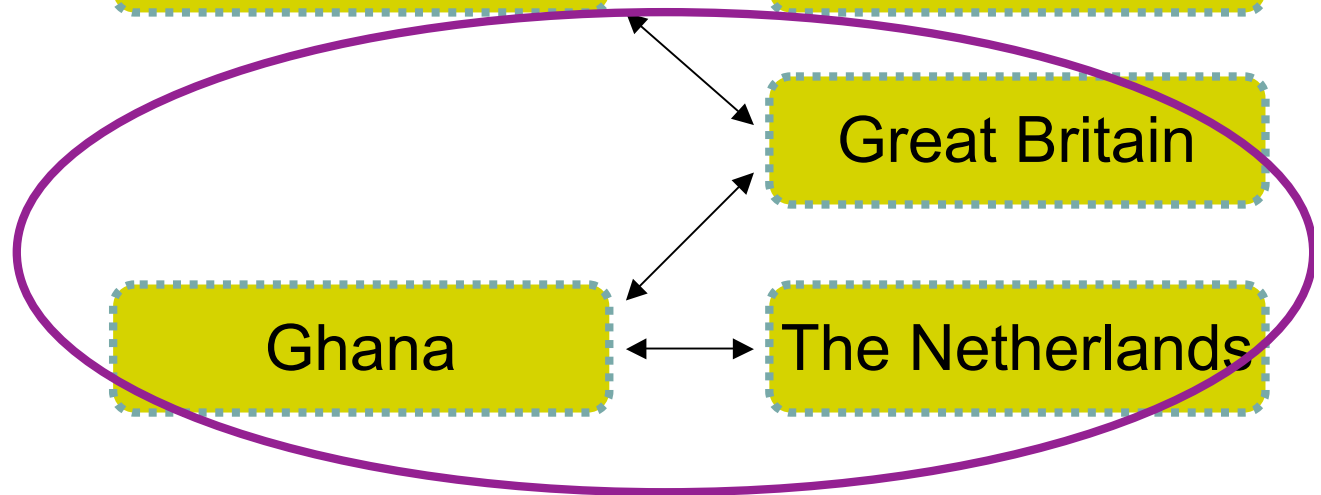
Migration flow 1



Migration flow 2



Migration flow 3



**MAFE**



Migrations  
between Africa  
and Europe

# Scientific Objectives MAfE

---



- Objective 1: Changing Patterns of Migration
- Objective 2: Factors Determining Migration Flows
- *Objective 3: Impacts of International Migration*
  - Two ‘Working Packages’:
    - Socio-economic Changes: Integration and Re-integration of Migrants
    - *Socio- demographic Changes: International Migration and Social Change*



Migrations  
between Africa  
and Europe

# International Migration and Social Change

---



- Interactions between international migration and family formation:
  - Union formation, union dissolution, fertility, family reunification
- Gender relations
  - Impact of male versus female migration; impact of growing female migration flows?



Migrations  
between Africa  
and Europe

# Data & Approach I

---



- Multi-level data collection
  - Individual, household, community, region
- Longitudinal data
- Transnational samples
  - Ideally: a representative sample of whole transnational community of each country under study
  - Actually: a sample including migrants, non-migrants, and returnees of each country under study to compare these groups

# Data & Approach II



<b>Sending countries</b> Sub-Saharan Africa (1,500 p/c)	<b>Receiving countries</b> Europe (200 p/c)
- non-migrants - returnees	- current migrants <i>(documented and undocumented)</i>

For more information on the MAfE data see:

[www.mafeproject.com](http://www.mafeproject.com)



# Union Formation & Union Dissolution:

## Ghanaian Migrants in the Netherlands (and the U.K.)

**MAFE**



Migrations  
between Africa  
and Europe

# Transnational Families



- Transnational families:
  - families whereby family arrangements are negotiated across geographic and cultural spaces
- A transnational perspective:
  - Challenging assumption that “physical, social, and political spaces perfectly overlap with geographical areas” (Mazzucato et al. 2004)
  - Not excluding those who do not move
    - Migrants’ ‘double engagement’ (Gillo & Mazzucato 2008)

# Partnerships & Migration I

---



- Generally:
  - Qualitative case-studies
    - Better futures
    - Problematic care-structures
  - Transnational - mixed - marriages
  - Asian or Latin-American context

# Partnerships & Migration II



Trend 1: most migrants marry someone from country of origin

- Motivations for transnational marriages (Beck-Gernsheim, 2007)
  - Kin obligation: marriage as a last route to migration
  - Promise of upward mobility
  - Hope to rebalance power relations within marriages

# Partnerships & Migration III

---



Trend 2: migration is related to an increase in union dissolution

- Motivations for union dissolution
  - Before migration:
    - To escape restrictive social contexts (women) (Hill, 2004)
  - After migration:
    - Disruption
    - Social and/or economic hardship
    - “Paper marriages”

# Partnerships & Migration IV

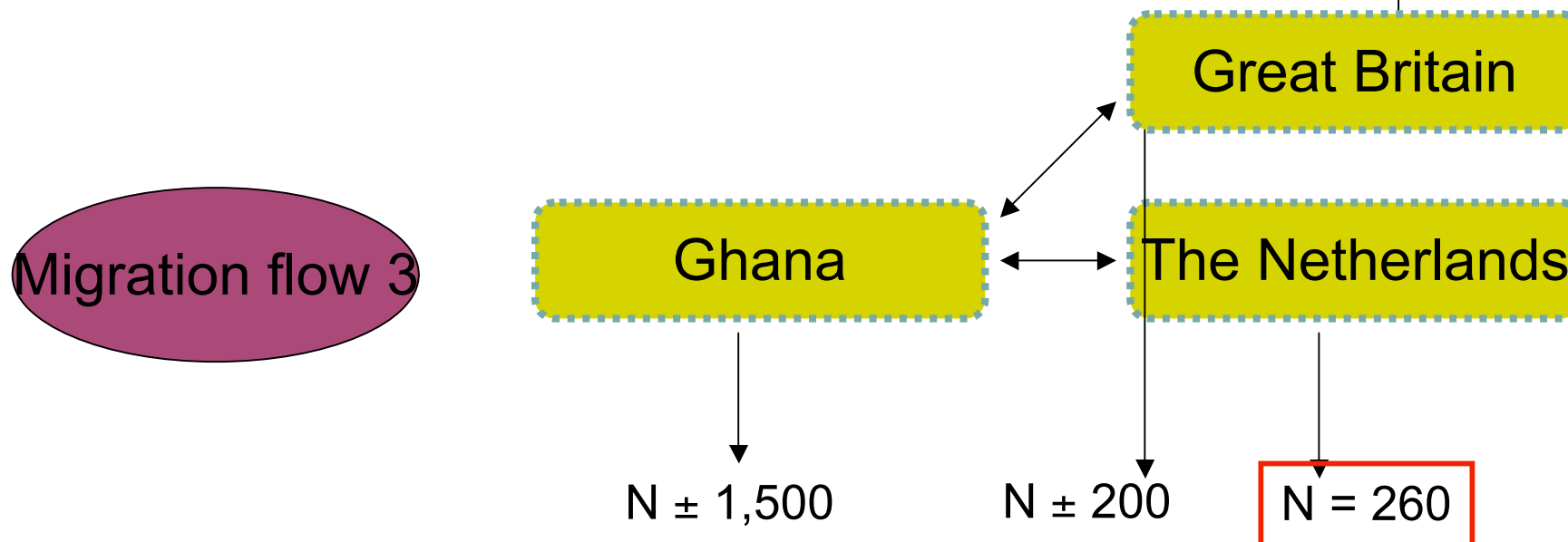
---



Trend 3: different migration experience for men and women

- Feminization of migration
- Conflicting gender expectations:
  - The underlying paradox of transnational marriages “the men seek a traditional wife while the women hope for more modern husbands” (Lauser 2008)

# Sample Characteristics I



Instead of comparison between migrants, non-migrants and returnees, compare between **different statuses of migrants**

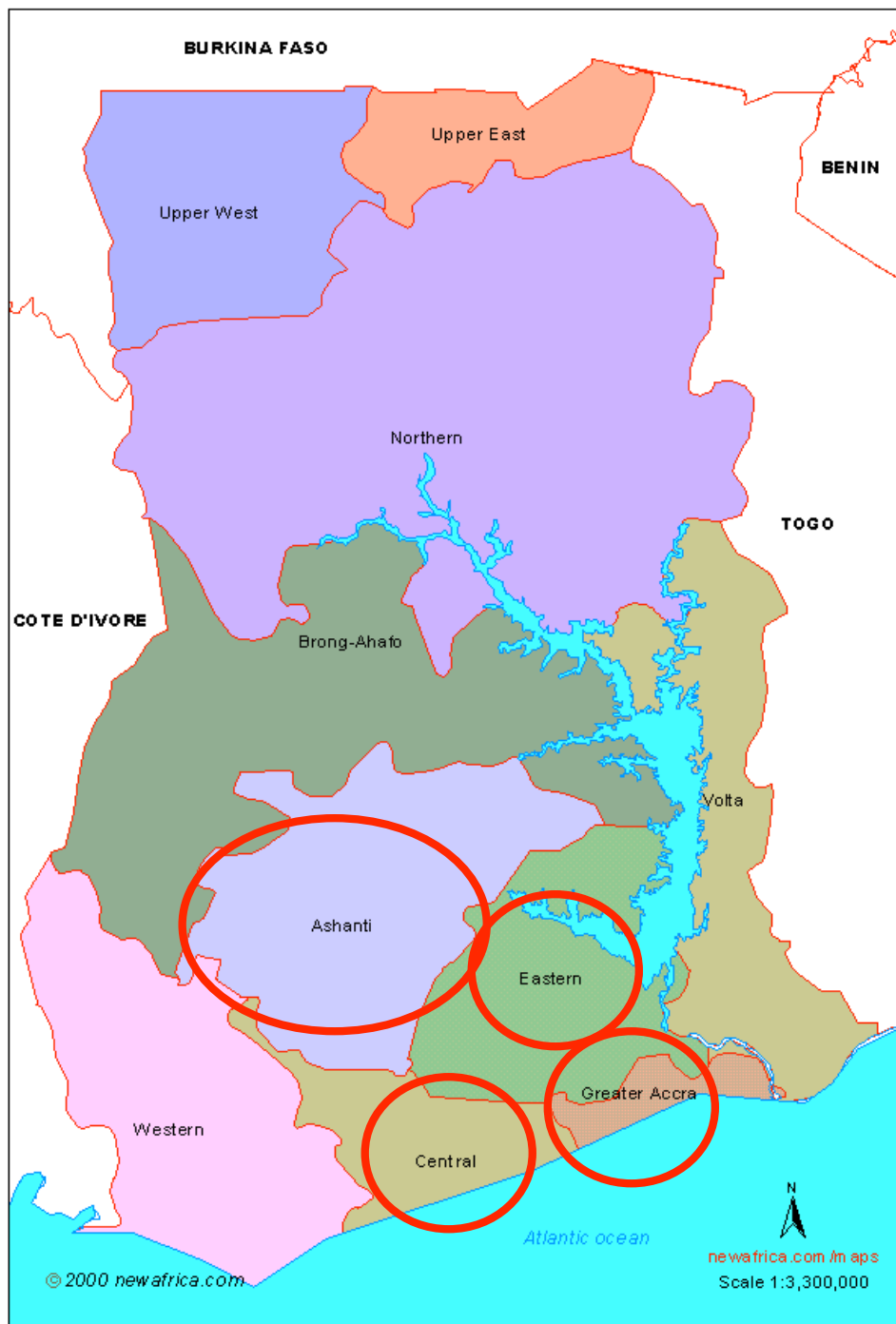


## Ghanaian migrants in The Netherlands, Where do they live?

Den Hague	18.5 %
Almere	5.4 %
Amsterdam	75.7 %



## GHANA ADMINISTRATIVE MAP

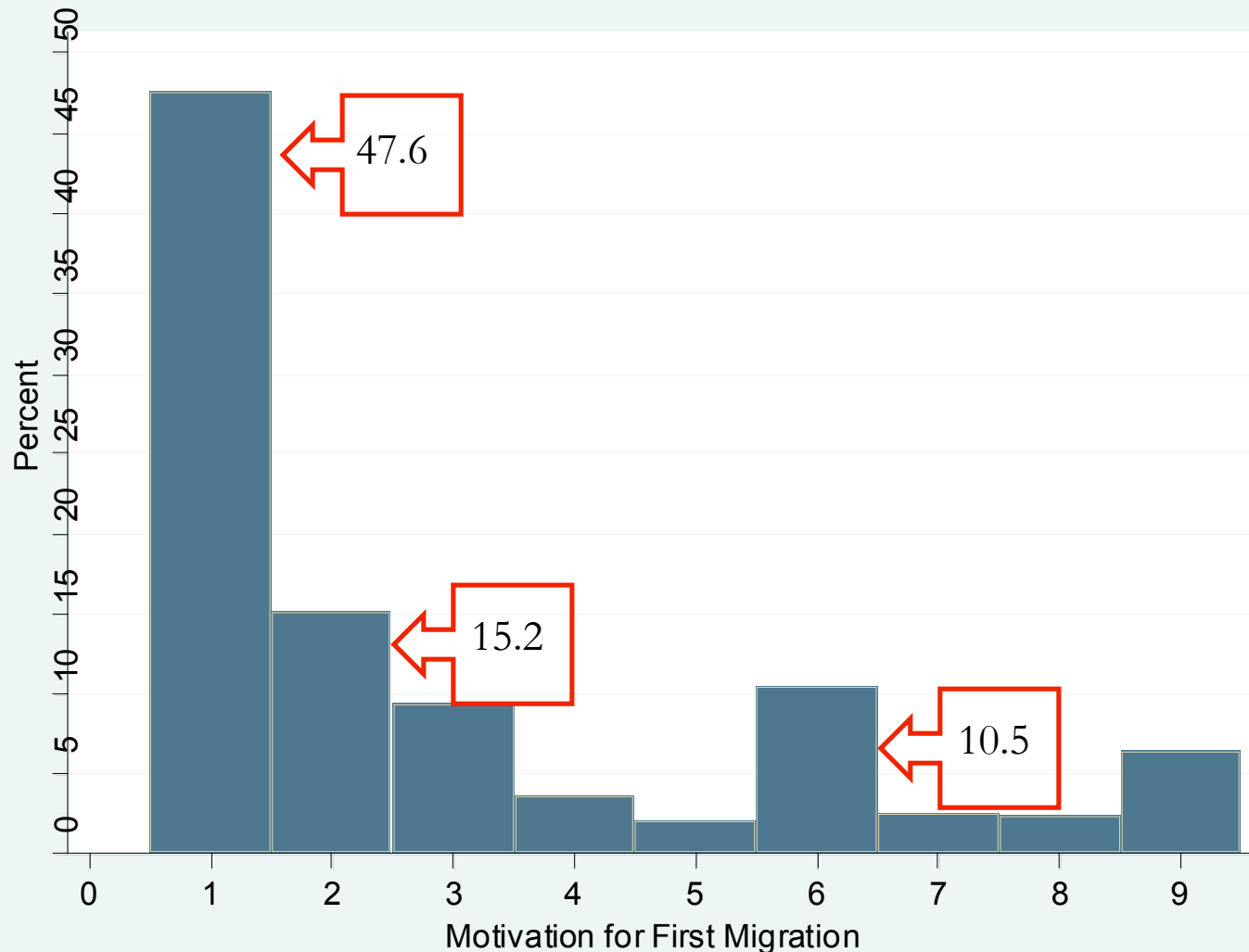


## Ghanaian migrants in The Netherlands, where do they come from?



Western Region	3.8 %
<b>Central Region</b>	<b>16.5 %</b>
<b>Greater Accra Region</b>	<b>11.9 %</b>
Volta Region	5.5 %
<b>Eastern Region</b>	<b>12.7 %</b>
<b>Ashanti Region</b>	<b>38.1 %</b>
Brong Ahafo	8.5 %
Northern Region	1.7 %
Upper East	0.8 %
Upper West	0.4 %

# Main Motivation First Migration



1. **Economic**
2. **Join partner**
3. Schooling
4. Seek asylum rejection
5. Travel
6. **Family reunification**
7. Escape restrictive environment
8. **Papers (marriage)**
9. Transit

# Preliminary results: descriptive statistics



		Sex			
		Male (53.7 %)		Female (46.3 %)	
		<i>f</i>	%	<i>f</i>	%
Age	21 - 34	38	27.3	45	37.5
	35 - 44	50	36.0	24	20.0
	45 - 54	36	25.9	34	28.3
	54 >	15	10.8	17	14.2
	Total	139	100	120	100

# Preliminary results: descriptive statistics



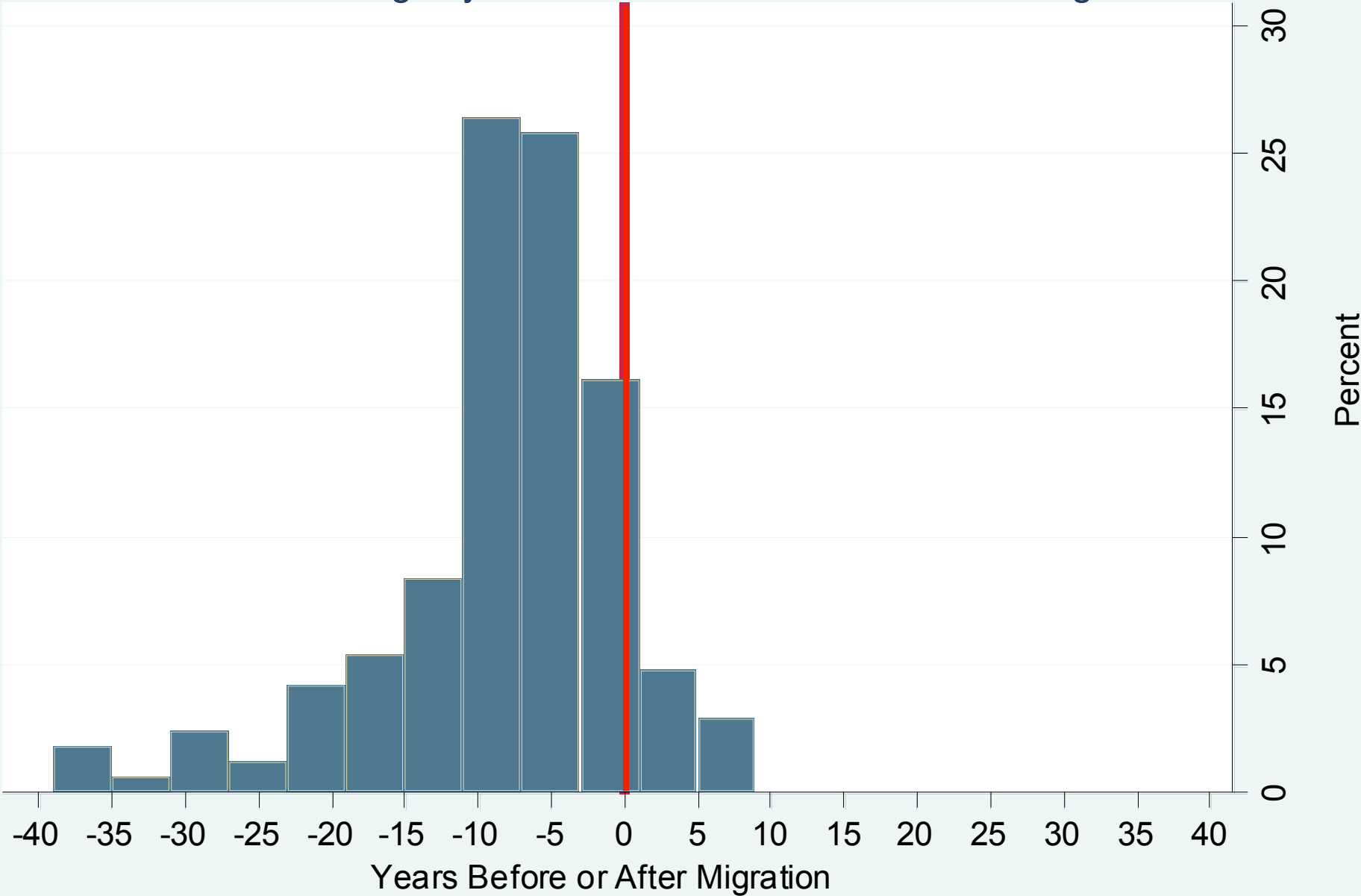
		Sex				
		Male		Female		
		total %	<i>f</i>	%	<i>f</i>	%
Residence permit	Visa	4.3	3	2.2	8	6.7
	Residence Permit	37.8	46	33.1	52	43.3
	No Residence Permit	20.5	35	25.2	18	15.0
	Need No Residence Permit	27.5	55	39.6	42	35.0
	Total	100	139	100	120	100

# Preliminary results: descriptive statistics

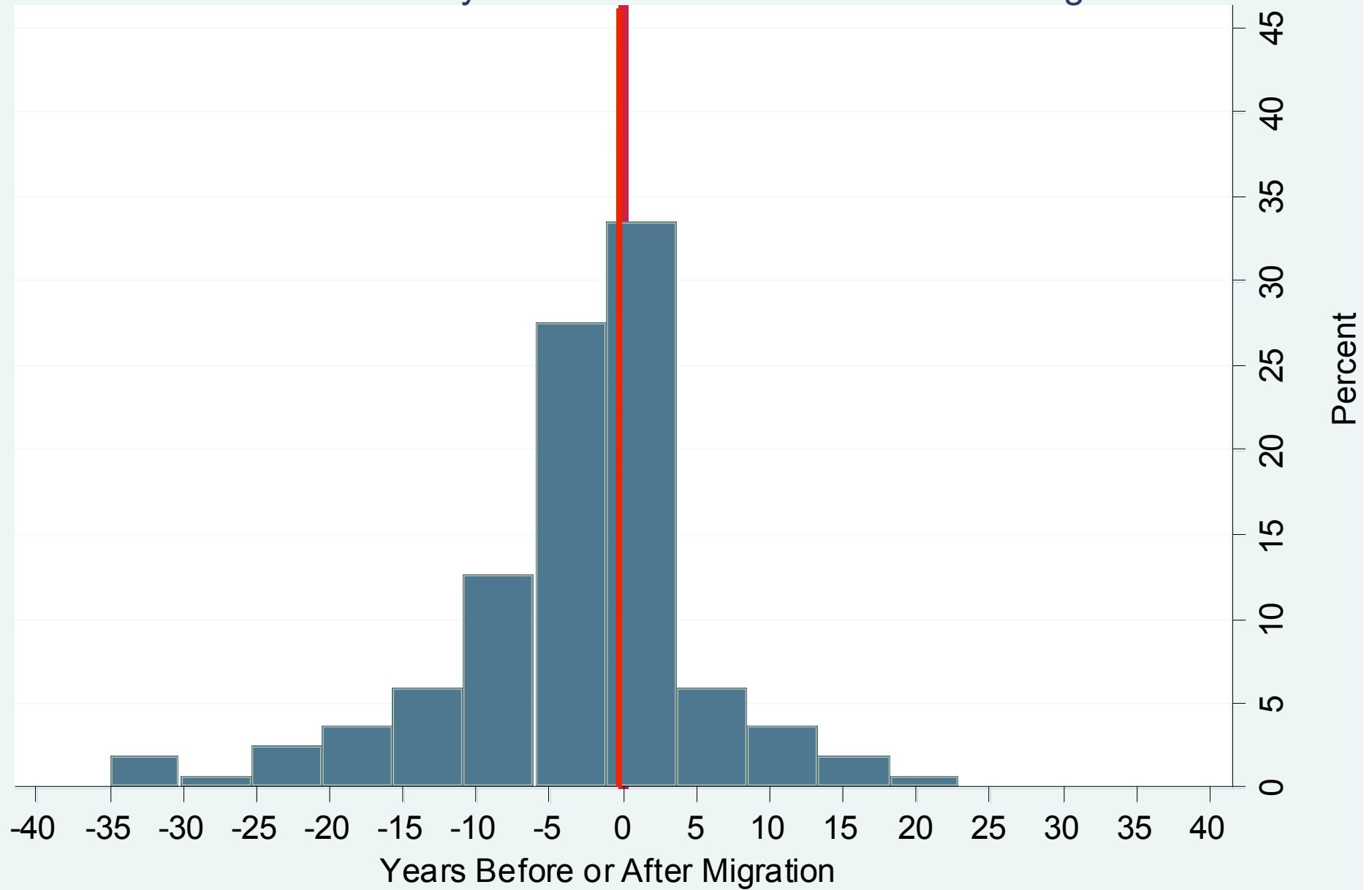


		Sex				
		Male		Female		
		total %	<i>f</i>	%	<i>f</i>	%
Education	No education	1.9	1	0.7	4	3.3
	Primary	4.6	3	2.2	9	7.4
	Secondary	28.8	31	22.3	44	36.4
	Post-Secondary	43.1	67	48.2	45	37.2
	Tertiary	21.5	37	26.6	19	15.7
	Total	100	139	100	121	100

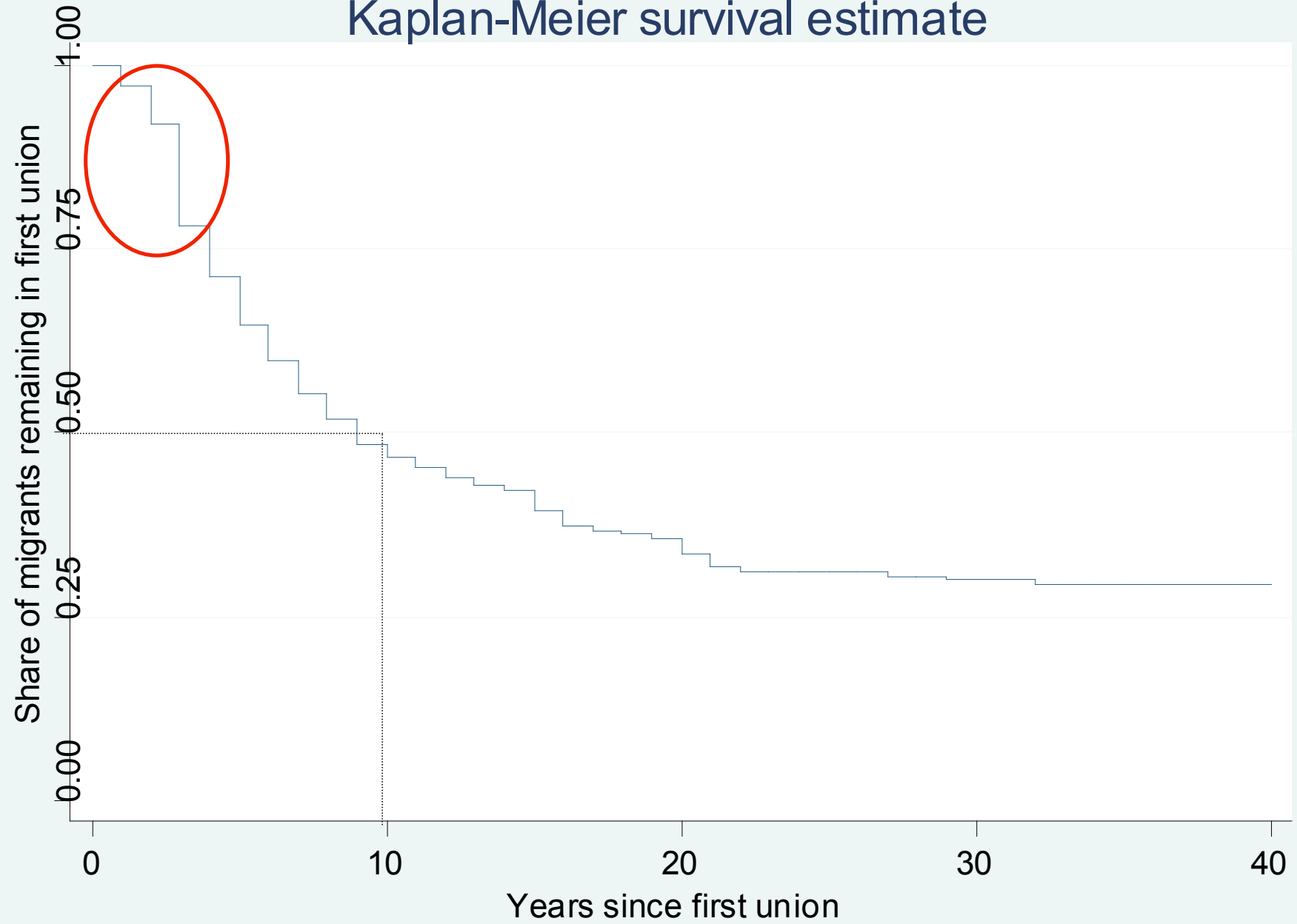
Distribution of First Marriage by Number of Years Before or After Migration



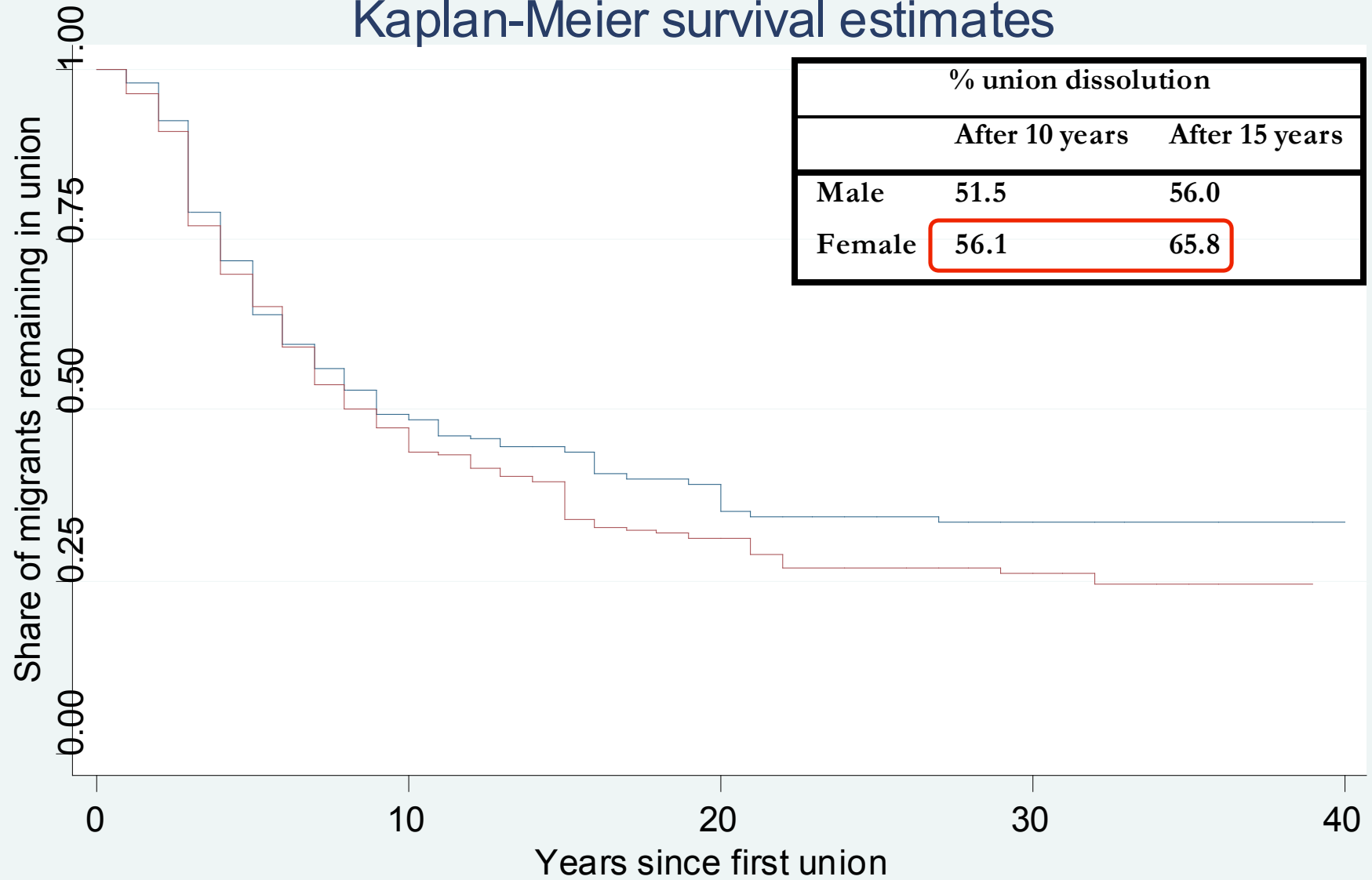
# Distribution of First Divorce by Number of Years Before or After Migration



# Kaplan-Meier survival estimate

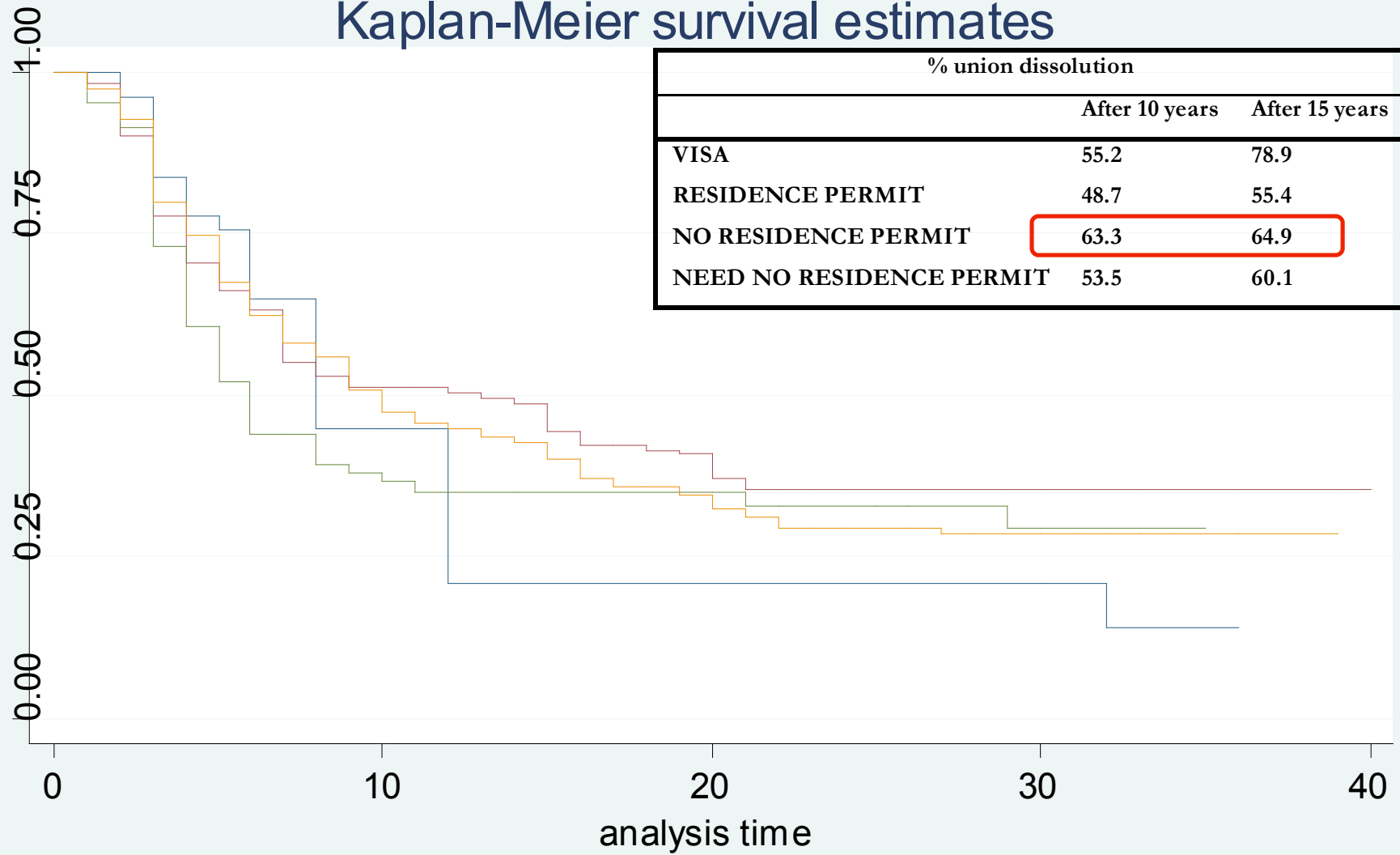


# Kaplan-Meier survival estimates



— Male — Female

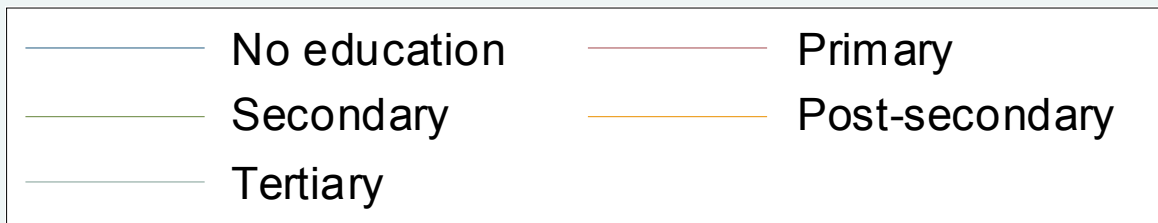
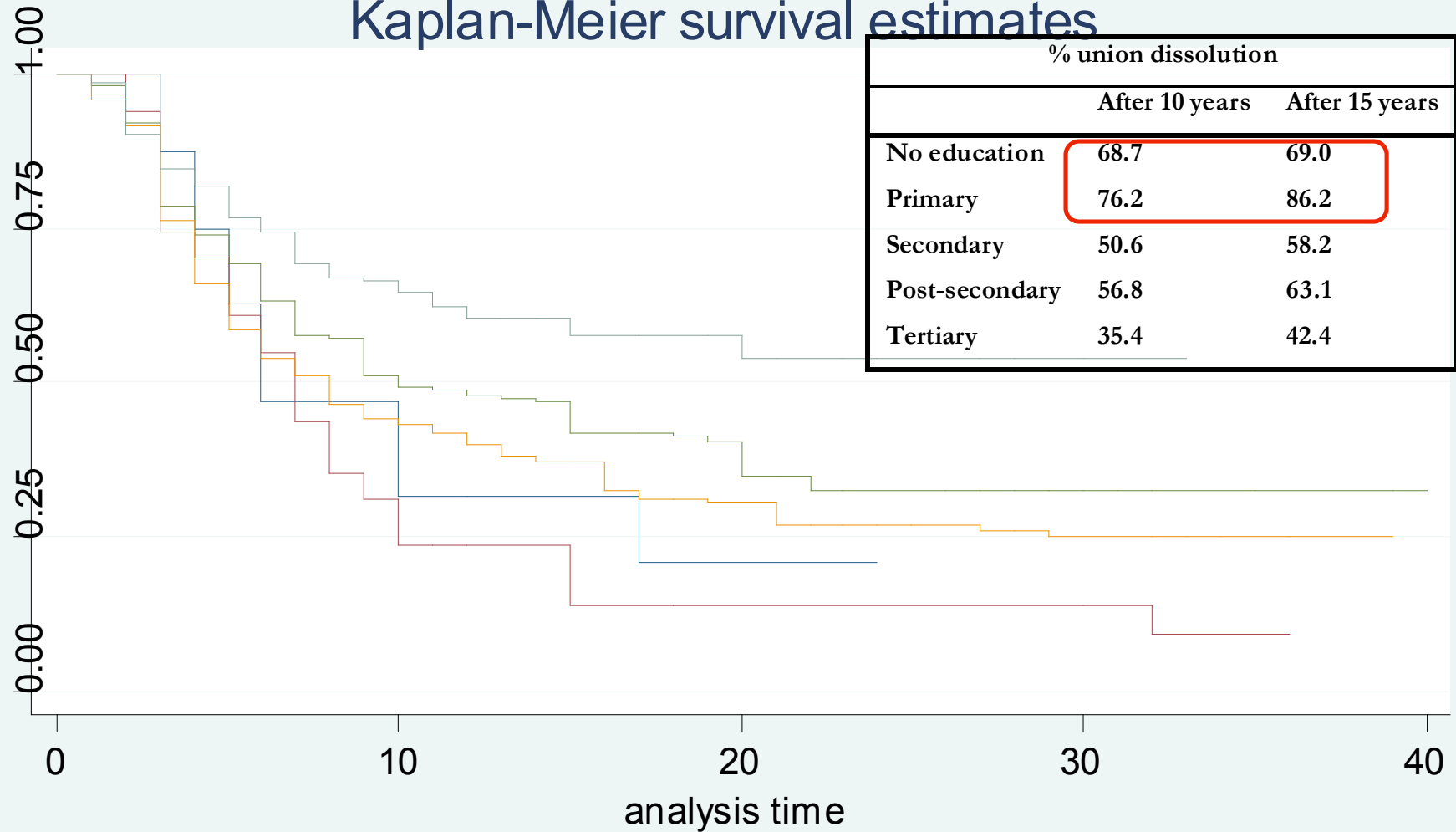
# Kaplan-Meier survival estimates



% union dissolution		
	After 10 years	After 15 years
VISA	55.2	78.9
RESIDENCE PERMIT	48.7	55.4
NO RESIDENCE PERMIT	63.3	64.9
NEED NO RESIDENCE PERMIT	53.5	60.1



# Kaplan-Meier survival estimates





# Next steps I

## Dependent variables

- Union formation & union dissolution
- Types of formation (marriage, cohabiting)
- Types of dissolutions (separation, divorce, death of partner)
- Age at first marriage

# Next steps II



## Event-history models:

- time-varying variables:
  - union duration
  - parenthood status in union
  - current union status
  - union status before union
  - **residence/work status**
  - **migration history**
  - **citizenship**
  - age
  - educational level
  - employment status
  - calendar period
- time-constant variables:
  - union order
  - gender
  - parenthood status before union



---

**Thank you!**

**Questions?**